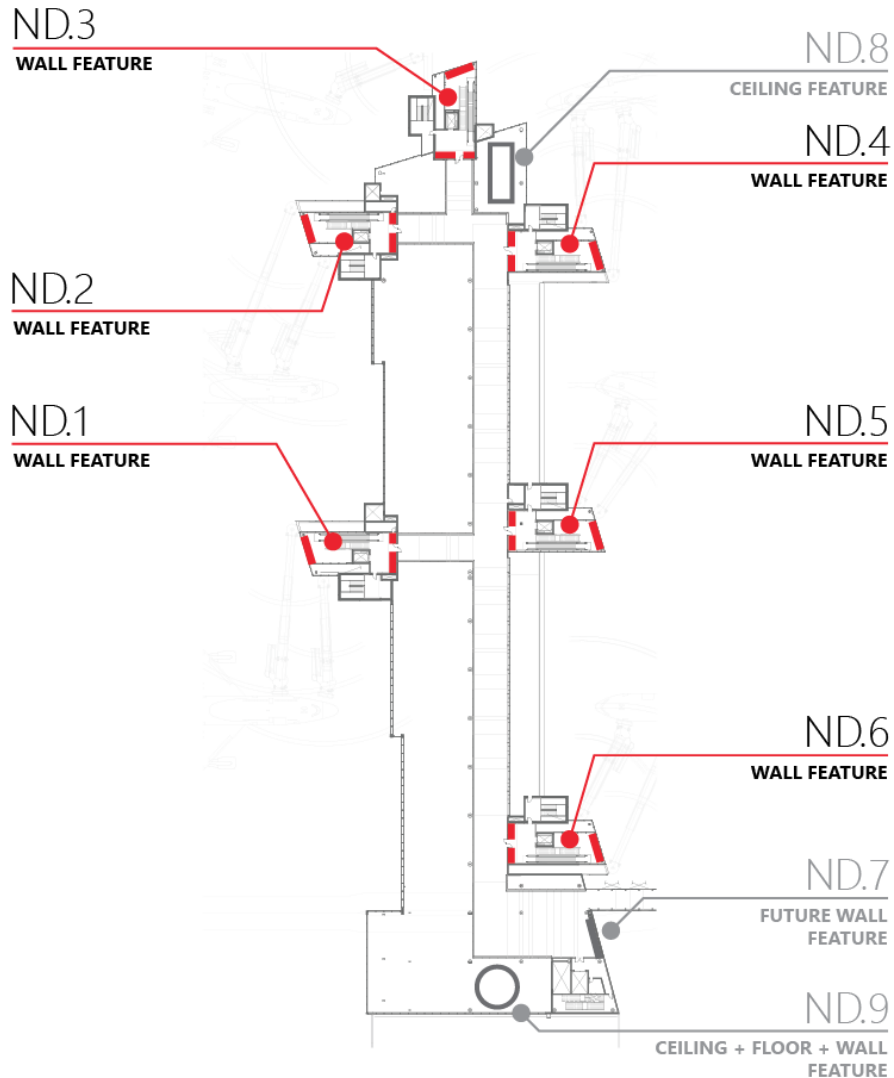
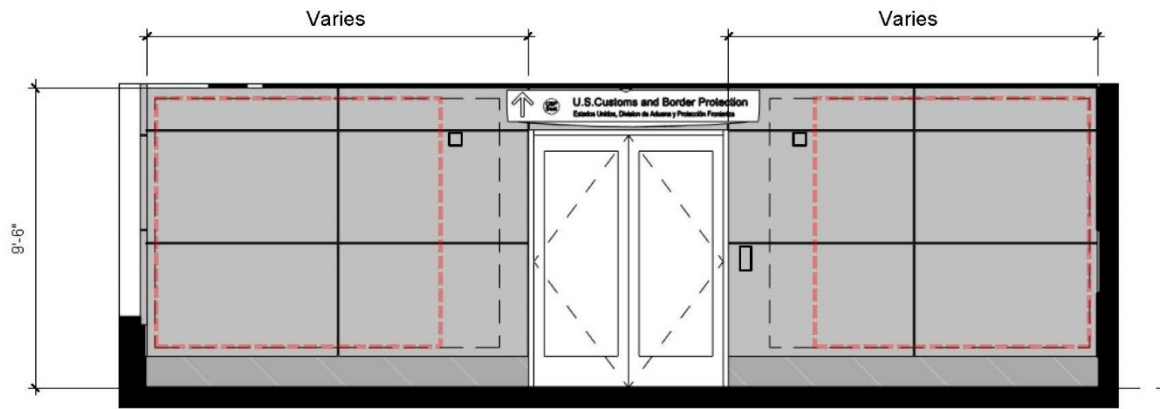
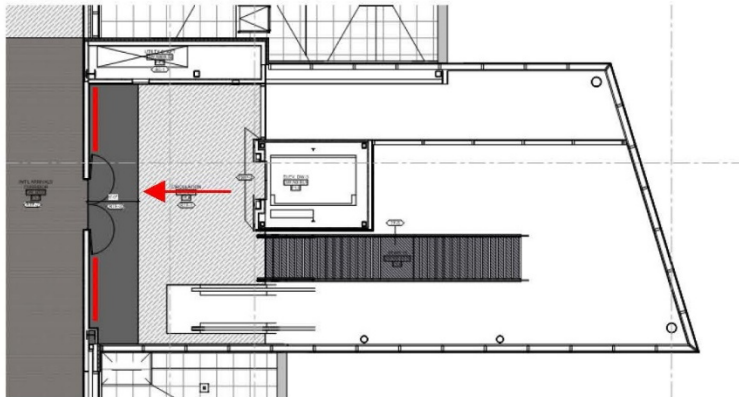


ND.1 thru ND.6 – Wall Features at International Arrivals Entrance - Upper Landing





Elevation



Dimensional Parameters

*2021 0708 REVISIONS IN RED

	Overall Back Wall	Left of Doors	Right of Doors
ND.1	8'-6"H x 29'-0"W	8'-6"H x 8'-0"W	8'-6"H x 7'-7"W
ND.2	8'-6"H x 26'-9"W	8'-6"H x 8'-0"W	8'-6" x 7'-7"W
ND.3	8'-6"H x 29'-0"W	8'-6"H x 5'-1"W	8'-6" x 11'-10"W
ND.4	8'-6"H x 29'-0"W	8'-6"H x 8'-0"W	8'-6" x 7'-7"W
ND.5	8'-6"H x 29'-0"W	8'-6"H x 5'-1"W	8'-6" x 11'-10"W
ND.6	8'-6"H x 31'-0"W	8'-6"H x 8'-0"W	8'-6" x 7'-7"W

Notes

The project is providing stainless base and phenolic wall panel for wall finish. Art may be incorporated as the wall finish in form of graphic panels. Accommodation of wall mounted security, access control devices, and door hardware to be coordinated with design. US Customs and Border Protection signage is required above the doorway as shown. MLIT to provide track accent lighting.

Weight Limit

15 PSF, maximum 120lbs at each attachment point

Target install date

4th Quarter 2022

